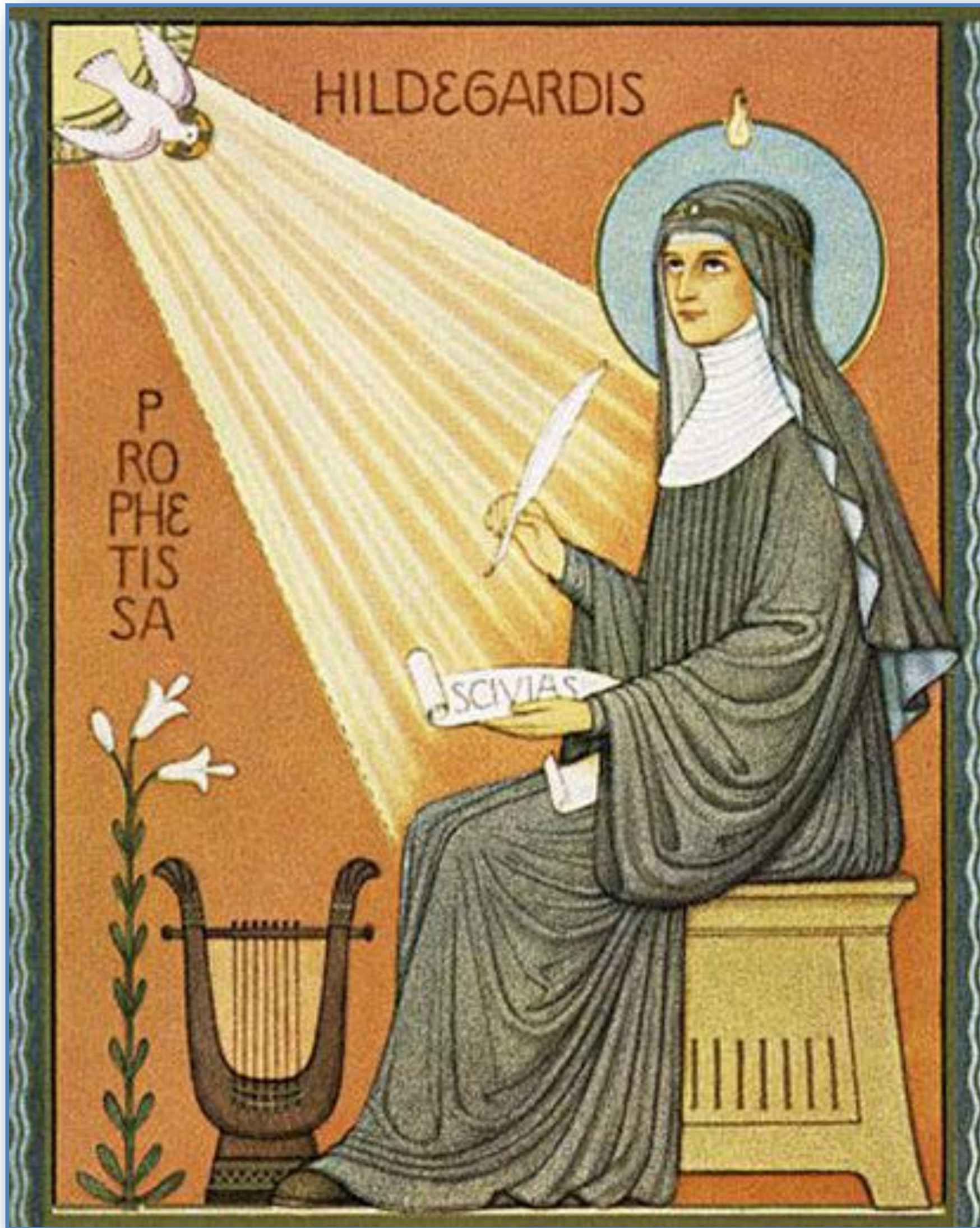


# Female Representation within Hildegard's Illuminations

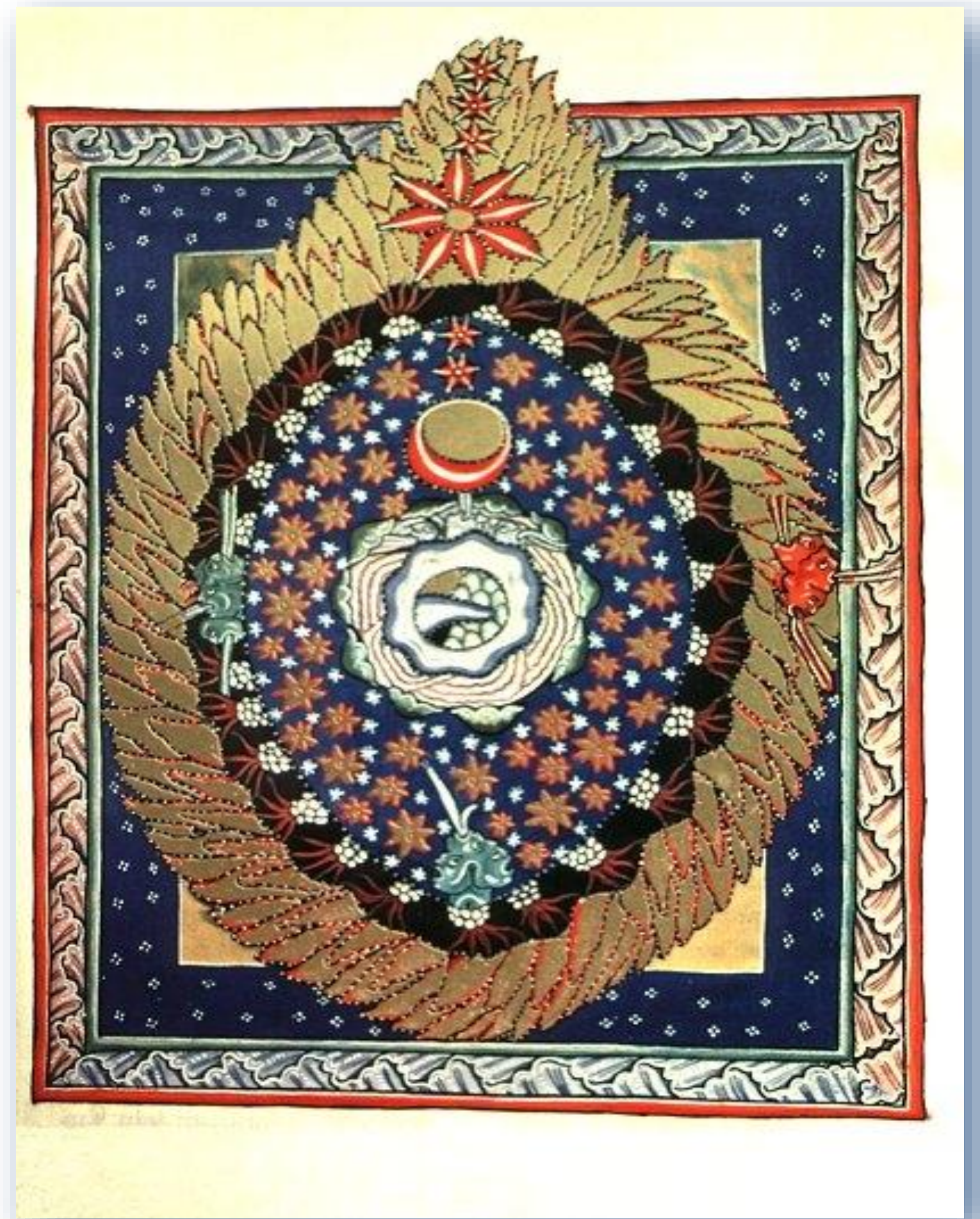
*Zach De La Cruz, Art & Art History*



HILDEGARD OF BINGEN CREATED ILLUMINATIONS ACROSS MULTIPLE TEXTS BASED ON HER DIVINE VISIONS. THIS RESEARCH EXAMINES HOW A FEMALE PERSPECTIVE CAN BE SEEN WITHIN HER WORKS.

## IMPACT

THIS RESEARCH HAS GREAT POTENTIAL TO OPEN ANALYTICAL DOORS IN THE STUDY OF ART PRODUCED BY WOMEN. PATRIARCHY HAS GLOSSED OVER MANY CONTRIBUTIONS BY WOMEN ARTISTS, AND THEREFORE THE IMPORTANCE OF FURTHER DISCOVERY BEGS THE QUESTION, "WHAT HAVE WE MISSED?"



AS SEEN IN HILDEGARD'S "THE EGG OF THE UNIVERSE (COSMIC EGG)" (FROM *SCIVIAS*), THERE IS A STRONG PRESENCE OF FEMALE FORM. THE COSMIC EGG IS STRUCTURED AS THE LEVELS OF THE PHYSICAL WORLD JUXTAPOSED AGAINST THE COSMOS. THE SUN AND EARTH ARE CENTRAL IN THIS PIECE, RESEMBLING THE FEMALE GENITALIA. THERE ARE STRONG CONNOTATIONS OF ALL LIFE SPRINGING FROM WOMEN.



## GOING FURTHER

THIS RESEARCH STIMULATES THE IDEA THAT FEMALE PERSPECTIVES CONTAIN A WEALTH OF INFORMATION THAT IS CRUCIAL TO ART CULTURE AS WELL AS OUR PHYSICAL WORLD.

## Acknowledgements

Dr. Lillian Joyce, Chair & Associate Professor of Art History