

The Historic Huntsville Quarterly

Volume 18 | Number 1

Article 3

3-20-1992

The Normalite : 1945

Historic Huntsville Foundation

Follow this and additional works at: <https://louis.uah.edu/historic-huntsville-quarterly>



Part of the [Historic Preservation and Conservation Commons](#), and the [History Commons](#)

Recommended Citation

Historic Huntsville Foundation (1992) "The Normalite : 1945," *The Historic Huntsville Quarterly*. Vol. 18: No. 1, Article 3.

Available at: <https://louis.uah.edu/historic-huntsville-quarterly/vol18/iss1/3>

This Article is brought to you for free and open access by LOUIS. It has been accepted for inclusion in The Historic Huntsville Quarterly by an authorized editor of LOUIS.



The
NORMALITE
1945



Dedicated

TO CAPTAIN ALVA TEMPLE, WHO HAS HELPED TO REVEAL THE POSSIBILITIES OF THE
NEGRO IN AVIATION DO WE DEDICATE THIS VOLUME

Captain Temple is a native of Pickens County, a former student of the State A. & M. Institute, and a graduate of the Tuskegee Army Air Base. During Captain Temple's eighteen months of service with the 99th Pursuit Squadron in Italy, he completed 120 missions over enemy territory. Captain Temple has gone a long way towards establishing a precedent for all Normalites. His achievements and loyalty to his country are worthy of commendation and imitation.



To Our Service Men . . .

We here do acknowledge our most profound devotion and admiration to you valiant men and women, who only a short time ago walked and studied amidst the rocks of Normal, but who have now taken your places in the service of our Country.

The task that is now being performed by you, fellow students, in the several theaters of war proves that you are believers in the Sovereignty of Service. We are sure that of all the services you can render to mankind, none is greater than the service to your Country during a time when its security is endangered.

We are very grateful to you servicemen and women, for the manner in which you have represented us as a racial group. You have unquestionably proved that the Negro, when given an opportunity to perform military functions can do so with as much accuracy and loyalty as any other human being. Thus you are helping to make the equality of men more evident.

The Y.M.C.A. feels closely connected with the cause for which all of our service men and women fight. Through its affiliation with the World Student Federation, the Y.M.C.A. seeks to reemphasize the idea of the brotherhood of man to young people of all races. This world movement of Christian students will play a large role in keeping the peace that you men and women strive so courageously to establish.



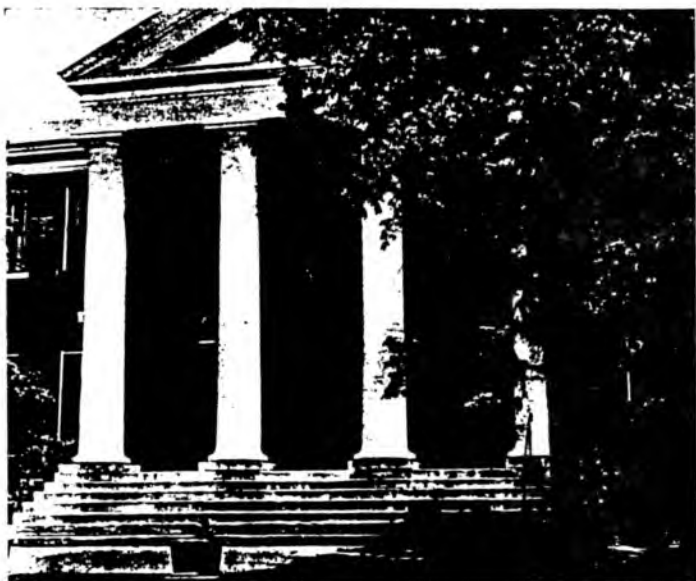
William Hooper Councilll

Dr. Councilll was a pioneer in Negro Education and Founder of State A. & M. Institute. Born a slave, Dr. Councilll lived to establish the school on the site where, tradition says, he was once sold. A. & M. remains dedicated to the ideal which Dr. Councilll expressed in the motto of the College, "Service is Sovereignty."



President J. F. Drake

A dynamic factor in our school's progress through the late Twenties, the Thirties and the early Forties of a century of unparalleled events—a veteran of World War I, an educator, a builder and a dreamer who dared to dream and make his dreams come true.



Carnegie Library



J. F. Drake Hall

SEVERAL *of* FACULTY



R. D. MORRISON, B.S., M.S.
Director of Agriculture

E. J. THORNTON, B.S., M.S.
Agriculture

ROBERT C. RICE
Printing

JAMES L. BRAY, B.S.
Shoe Repairing, Dean of Men

JAMES M. BELLE
Superintendent of Building and Grounds

G. H. HOBSON, B.S.
Physical Education

ABIGAIL HOBSON, B.S.
Home Economics

SHEPPARD MAY, B.S.
Vocational Agriculture

R. H. LEE, A.B., A.M.
English

MEMBERS

our

AND STAFF



ROBERT A. CARTER, A.B., M.S.
Chemistry, Dean of Instruction

J. H. WILSON
Financial Secretary

A. P. CAMPBELL
Dietitian

G. O. McCALEP, A.B., M.S.
Social Science

C. W. ORR, B.S., A.M.
Principal Laboratory Schools

W. B. STALLWORTH
Welding and Sheet Metal

SAMUEL W. WILLIAMS, A.B., B.D., M.A.
Chaplain and Instructor in Social Science

M. G. BROWNE, B.S.
Secretary to the President

LINTON BERRIEN, A.B., Mus. B.
Music