

## University History Walking Tour and Virtual Timeline

*Danial Ahari, Student (Computer Science Department)*  
*Drew Adan, Archivist (Archives and Special Collections)*  
*Dr. Christine Sears, Dept. Chair (History Department)*

### What We Set Out to Do

- Document UAH history digitally
- Increase interest in UAH history
- Provide digital access to UAH history
- Supplement existing resources in the Archives and Special Collections

### What We Achieved

- Made a timeline to represent UAH's long past
- Made a walking tour using Clio that explores and explains the history of UAH
- Provided more accessible information about pre-UAH history

Scan me for the Walking Tour!

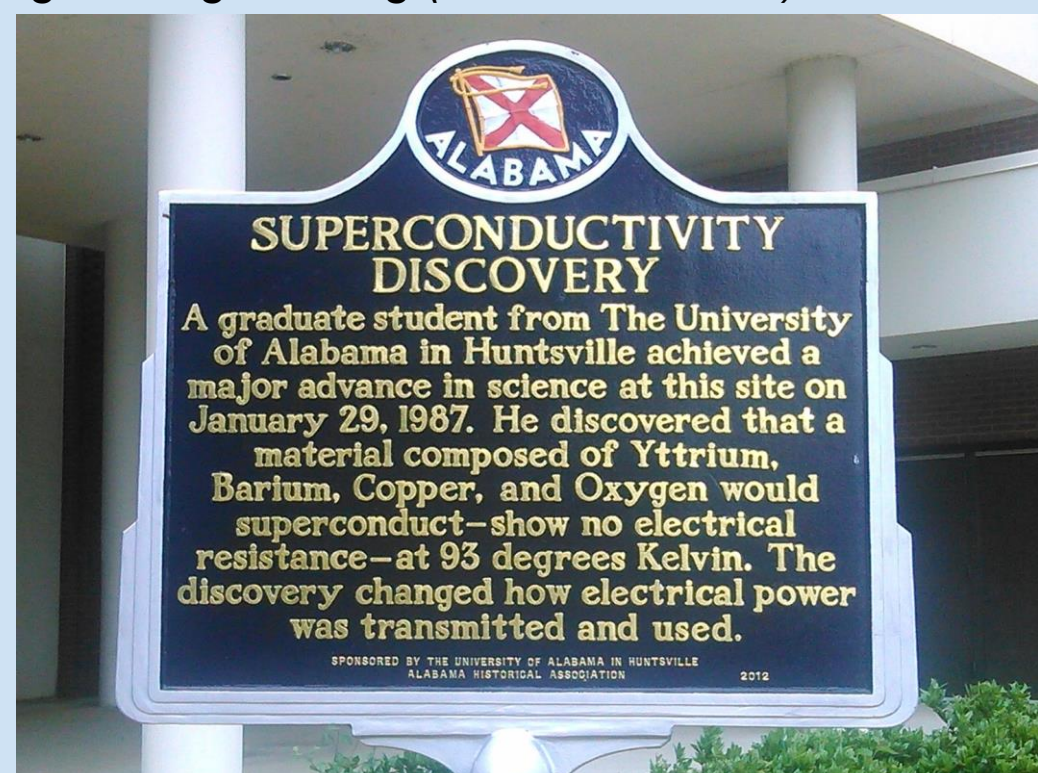


<https://www.theclio.com/tour/2221>

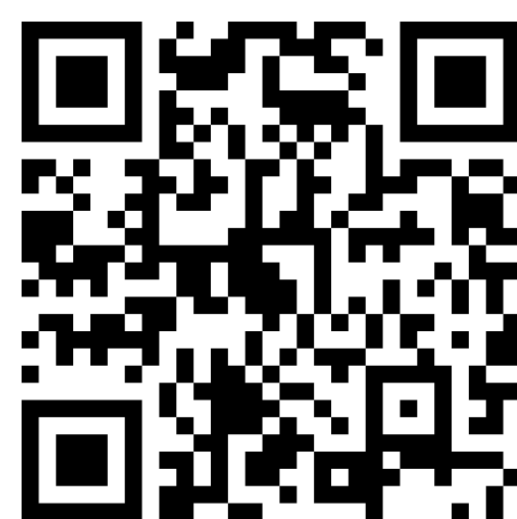


**Figure 1 (Above):** A postcard of Morton Hall in its original form as constructed in 1960.<sup>1</sup>

**Figure 2 (Below):** Photo of historic marker at Wilson Hall documenting the Superconductivity Discovery from 1987 at the Science and Engineering Building (now Wilson Hall).<sup>2</sup>



Scan me for the Timeline!



<http://libarchstor2.uah.edu/UAHTimeline/>



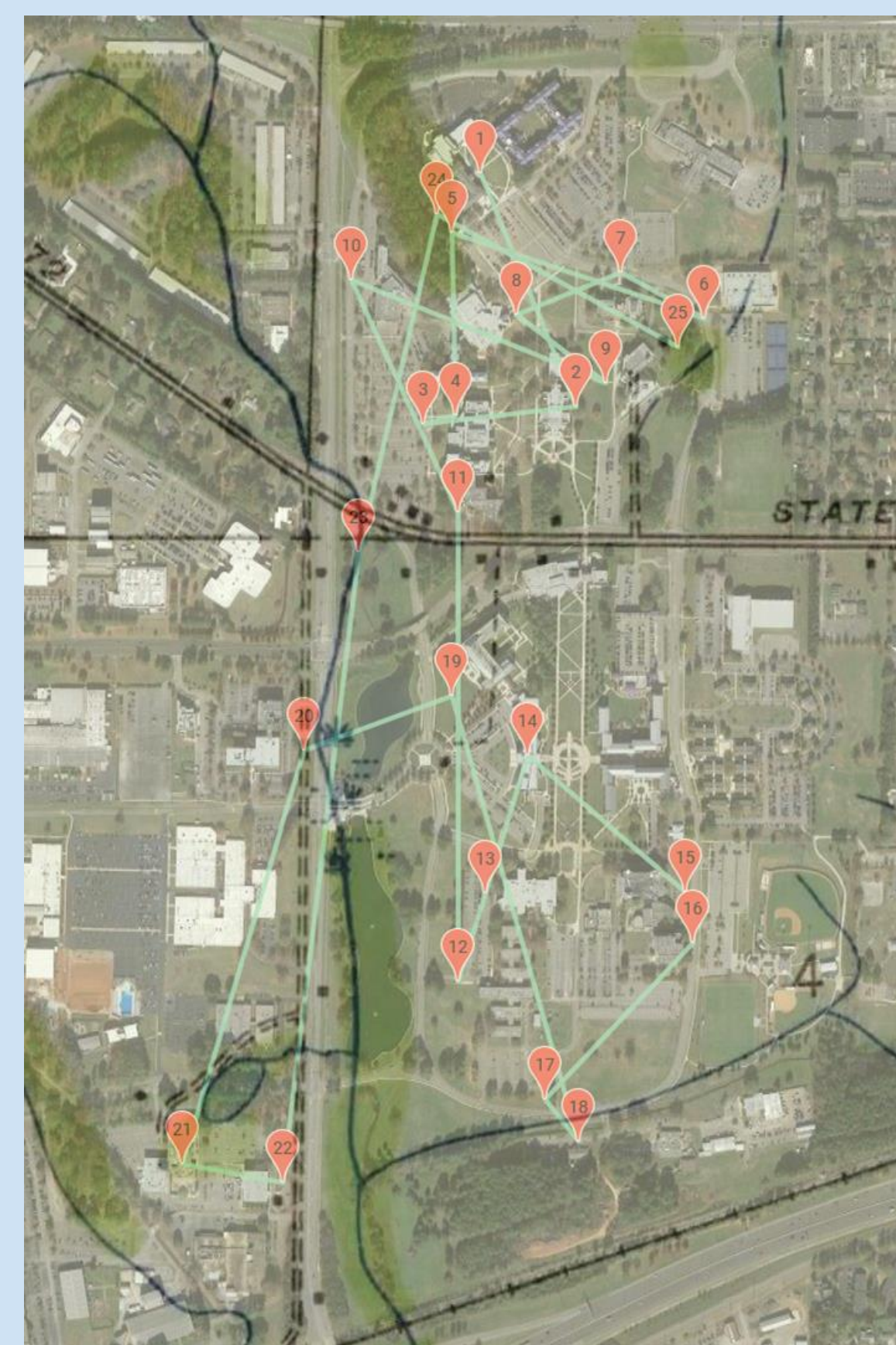
**Figure 3 (Above):** Photograph of Danial Ahari (left) and Drew Adan (right) looking at a rendering of the 90s UAH campus in the Archives reading room.

**Figure 4 (Below):** Headstone of Llewellyn Jones, founder of the Avalon plantation, from the Antebellum era which was located on the land that would become UAH.<sup>3</sup>



### How We Did It

Through a collection of historical, researching, and technological resources, we created two robust digital history projects that act not only on their own, but also as a supplement to resources already provided by the historical community at UAH.



**Figure 5 (Above):** Map of walking tour, laid over Google map of modern UAH, with old map of "Madison" laid over for reference.<sup>4, 5, 6</sup>

### Why Campus History?

Campus history is a subject that is near and dear to our hearts, and we believe that it should be easily available to the UAH community. This project is an attempt to increase availability of and interest in the materials that we distribute.

### References

1. "Morton Hall," *The UAH Archives and Special Collections*, accessed July 5, 2022, <http://libarchstor2.uah.edu/digitalcollections/items/show/5389>.
2. Lee Hattabaugh, "Superconductivity Discovery Marker," *The Historical Marker Database*, accessed July 7th, 2022, <https://www.hmdb.org/m.asp?m=94963>.
3. University of Alabama in Huntsville, "Headstone of Llewellyn Jones.," *The UAH Archives and Special Collections*, accessed July 5, 2022, <http://libarchstor2.uah.edu/digitalcollections/items/show/566>.
4. Google. *Google Maps*. Web. 2022.
5. Clio. *Clio*. Web. 2022.
6. U.S. Geological Survey. Rutland, VT. 1936 ed., Scale 1:24,000. 7.5 Minute Series (Topographic). Madison, AL.: USGS, 1936. Accessed July 25th, 2022. <http://historicalmaps.arcgis.com/usgs/>.

### Acknowledgements

Funded in part by UAH Office of the President, Office of the Provost, Office of the Vice President for Research and Economic Development, and The Dean of the College of Science. This project would not be possible without the amazing written work of Samantha Allen, the sheer engagement of Caroline Gibbons from the Archives and Special Collections in assisting with finding photos, Ben Hoksbergen's archaeological studies, and the welcome support from the Jones family for conducting research on 19th century Madison County history.