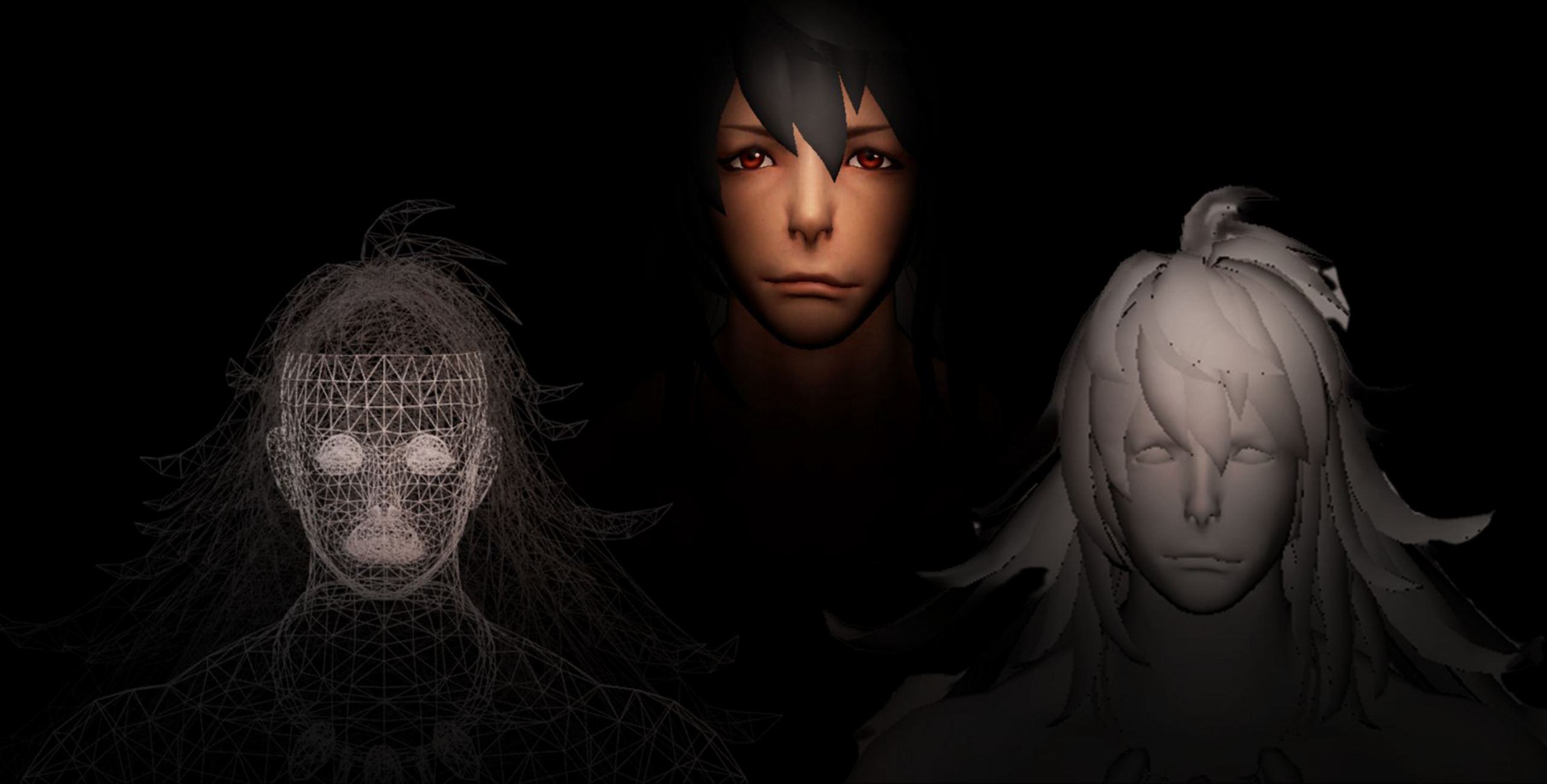


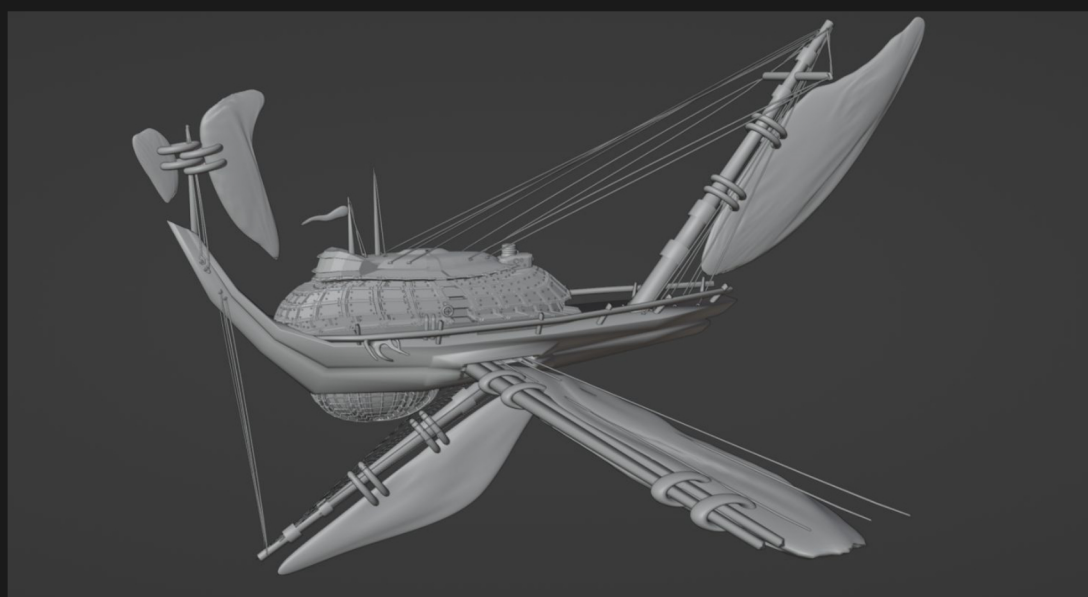
Real Life or Just Fantasy: Live Performance to Animation

*Cole Rosenthal, mentor Vinny Argentina
Department of Art, Art History & Design*



Performance capture can help create landslide stories that allow us to escape from reality.

Custom 3D Models



Various TRINKETS and DEBRIS are seen floating in the air...
Much of it old, rusted, weathered, and in decay.

Suddenly!

A rush of wind, carrying debris of wood and rock. The
trinkets are blown away in a large mess.

A LEVIATHAN appears! No doubt the source of the chaos.

HALVAR is flung among the debris.

HALVAR
(WHAM)
WRAAAAAA!

Suspended in wind and cloud, he is powerless to avoid...

Original Script



Optical Motion Capture

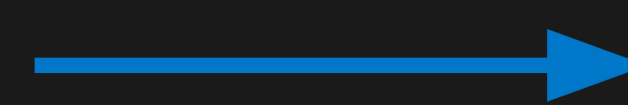
Real Time Rendering



Head-Mounted Facial Capture



See it here!



Lost in Dawn

Acknowledgements

All RCEU projects were sponsored in part by the Alabama Space Grant Consortium, the UAH Office of the President, Office of the Provost, Office of the Vice President for Research and Economic Development, the Deans of the College of Science, the College of Engineering, the College of Arts, Humanities, and Social Sciences, the College of Education, and the College of Nursing. Special thanks to Ian Bohanan, Harleigh Bass, and Dave Stewart for performance capture assistance!