

The Historic Huntsville Quarterly

Volume 23 | Number 4

Article 10

12-21-1997

Condition Report

Christine Young

Follow this and additional works at: <https://louis.uah.edu/historic-huntsville-quarterly>

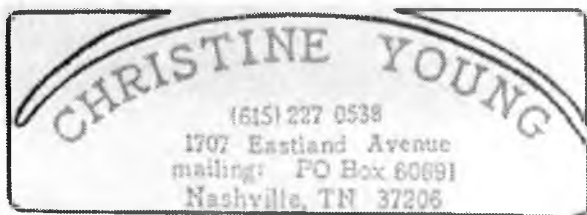


Part of the [Historic Preservation and Conservation Commons](#), and the [History Commons](#)

Recommended Citation

Young, Christine (1997) "Condition Report," *The Historic Huntsville Quarterly*. Vol. 23: No. 4, Article 10.
Available at: <https://louis.uah.edu/historic-huntsville-quarterly/vol23/iss4/10>

This Article is brought to you for free and open access by LOUIS. It has been accepted for inclusion in The Historic Huntsville Quarterly by an authorized editor of LOUIS.



October 4, 1996

C.K. Colley
COUNTY COURTHOUSE
inks, watercolors and gouache
image: 24 1/8" h x 35 3/16" w
support: 29 1/2" h x 39" w
owned by the Central Presbyterian Church
contact: Carol Ann Samples

CONDITION REPORT

The architectural rendering is created over a graphite underdrawing. The final drawing consists of inks, both blue and black, and watercolor washes. White gouache is used for the globes on the lighting fixtures. The support is a moderate weight sheet of paper; the paper is originally off-white in color and appears to be of rag composition. The drawing is solid mounted to a sheet of laminated paperboard. The board is composed of lignified mechanical wood pulps. The adhesive is unidentified, but watersoluble. There are remnants of an old window mat and animal glues on the margins of paper around the drawing.

The drawing was recently rescued from conditions of extremely poor storage. Deterioration both pre-dates and post-dates this period.

Generalized discoloration of the paper is moderate. The image area is very much darker due to exposure to light. The dimensions of this damage were determined by the opening of the old window mat; the image extends beyond the old window on all sides, by as much as 3/4" on the right side. The severity of this light damage suggests that the drawing was matted and lit for many years. Mottling in the discoloration of the sky area adjacent to the cupola may represent faintly painted clouds, or may be irregularities in discoloration caused by uneven application of the mounting adhesive.

The drawing has suffered significant and severe damages since unframing. The sheet is peppered with waterstains of all sizes. The right hand side appears to have actually soaked in water. The paper of this margin has rotted away without trace. Mold growth is found over the entire drawing. At the right side, the mold has stained the remaining paper fibers in dramatic fashion, with much of the remaining margin being bright orange in color. In addition to mold growth and waterstaining, the drawing is heavily soiled. Most of this is general soot, but

there are also numerous smudges. Circular deposits of soil in the right half appear to have transferred from a spinning or turning object, possibly a shoe heel. Accretions are varied and numerous. Between accretions, mold and old glues, the surface of the drawing is measurably three dimensional.

Other than delaminations and losses due to the aforementioned water damages, the physical condition of the drawing is fair. The paper is clearly degraded and weakened. Shallow surface damages in the form of slashes and gouges are common in the lower half of the drawing. As a form of hidden damage, the paper is weakened and softened by damage to the sizing; this is a form of dilute adhesive added during papermaking to reduce the porosity of the paper and to impart physical strength.

TREATMENT PROPOSAL

expose to thymol vapors to kill active mold spores
surface clean to remove soiling, mold, residues of glue
remove mount from reverse by delamination
wash in distilled water with alkali
overall back with Japanese paper and paste
inpaint any losses with watercolors

ESTIMATED COST: \$700-800

Christine Young